

13 November 2020

Pyrford C of E Primary School Weekly Newsletter

They shall grow not old, as we that are left grow old:
Age shall not weary them, nor the years condemn.
At the going down of the sun and in the morning
We will remember them.


THE NEWARK TRUST



Inside this issue

Headteacher's Letter	2
Toy Donations.....	2
Considerate Driving	2
Parking on Monday 16th	2
Diary Dates	3
Christmas Chocolate Tombola	4
Golden Book	5
Spelling Shed	6
Times Tables Rockstars.....	6
Assembly	6
Elf Visits	7
Christmas Tree Sale	8
Easy Fundraising	8
Christmas Raffle.....	8
Christmas Puddings	9
Secret Garden Competition	10
Rainbows.....	10
Admissions Consultation	10

Toy Donations

Are you having a pre-Christmas toy clear out and have any good quality items that Year 1 might like? If you have any of the following, please email Miss Adams

s.adams@pyrford.surrey.sch.uk

- Small toy cars (we are very short of cars!)
- Wooden train track
- Playmobil
- Sylvanian families
- Happyland toys
- Disney Princess toys

Considerate Driving

We have sadly received a complaint from a Peatmore Avenue resident about parents parking across driveways and on junctions, and who has been verbally abused when trying to drive away from their property. This is unacceptable and we would ask that we all treat our neighbours with consideration and respect.

Parking on Monday 16th

Please be aware that there is a funeral taking place at the Church of the Good Shepherd at 3pm, so extra consideration regarding parking is respectfully requested.

Headteacher's Letter

Good morning. Business continues to run as normal for us here at school and I can report that attendance has been high, so a big thank you to everyone for your collective efforts.

As a staff we have been working hard to get Covid safe Christmas plans in place, I thought I would outline those today so that we all have something to look forward to, even if it isn't quite the same as usual. We will be kicking off our Christmas celebrations in December, here is a run-down of our plans so far.

Christmas cards

We are keen to encourage children to continue this tradition and we will be having bubble post boxes with suitable quarantine periods in place. Children are welcome to bring in cards for their friends and staff from **Tuesday 1st December to Tuesday 15th December**. Please mark names clearly as well as class names and we will distribute them.

Christmas decorations in school

We want to go over the top to make school an inviting happy place, so decorations will be up in time for 1st December by staff and all children will contribute towards displays in school too. We will post pictures on seesaw and the newsletter so you can see how it looks on the inside. A wide range of art and creative activities have also been planned in class for children and I know Advent calendars and Christingles are also in hand.

Christmas pantomime

This is due to take place on **Tuesday 1st December** for our KS1, Y3&4 and Y5&6 bubbles. Children can also wear mufti of their choice on this day - see the chocolate raffle below. The pantomime this year has had to be fully adapted to ensure it is covid safe with only one actor attending (socially distanced) emerging from the film screen which will all form part of the production.

Christmas chocolate raffle

Please see the flyer at the end of my letter. We are asking for **donations of chocolate** (as much or as little as you like) so that we can have a chocolate raffle and provide every child with a treat to take home at the end of term. Children may wear **mufti on Tuesday 1st December** in return for donating chocolate. I'd appreciate any offers of help to pull this together, ie make bundles of chocolate, stick on raffle tickets etc. Drop an email to c.anderson@pyrford.surrey.sch.uk if you could possibly spare some time and we can put a covid safe plan together!

Christmas elf visit

Our youngest children in Squirrels and Reception classes will be having an exciting elf visit to EYFS with lots of fun and frolics (Mrs Murray will fill you in on details). Again full Covid safety precautions will be in place.

Christmas productions

A highlight of our year! We are aiming to put together various bubble productions and film them for you. All children will be included. We are currently ploughing through Covid and internet safety procedures to get these in place. Phase leaders will communicate to you separately with plans and you may be asked to consider changing permissions for sharing media or negotiating a way for your child to be included without being filmed (we have lots of creative ideas and will contact you).

Christmas lunch - 8 - 11 December

See the bubble dates under diary dates on the right.

We are hosting Christmas lunch this year for our bubbles and we will be serving at tables in the hall. Our cook Vanessa is busy planning festive decorations and food which I am sure the children will enjoy (Vanessa is always creative and we have her to thank for our remembrance decorations and displays/food this week). We have to do this over four days to allow enough clean down time etc and you can book via Scopay if you would like your child to have the hot meal on their lunch day. Or feel free to send in your own festive lunch. Children will be sitting with their class mates, wearing their party hats and we aim to have a great party atmosphere. On the day of your child's bubble Christmas lunch, we are encouraging your child to wear a **Christmas jumper/top/outfit and to donate £1** or more which we will donate to **Save the Children**. Uniform is not required on this day, come in your festive gear!

Christmas stories by staff

Staff have agreed to film themselves reading Christmas stories throughout December. We will broadcast these around school in classrooms and will try to upload to seesaw/website so that you can also have them at home for children's bedtime should you wish.

Christmas church service

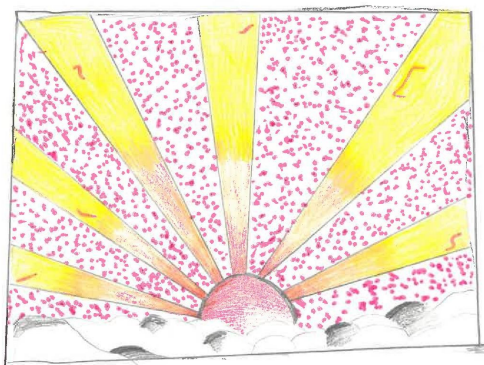
This year we will be doing this virtually as we have with all of our other worship. Children will experience this via the classroom screens and will also participate in pre-recorded sessions.

Our aim is to give our children something to look forward to. We know the last few months have been really tough on families, despite this, the children have shown true resilience and they deserve some fun. If you have any other great, covid safe, easy to organise activities, do get in touch.

Finally, thank you to parents who have booked the movie and tea night at Treetops tonight. I will be frank; the school has lost a huge amount of revenue at our breakfast club and Treetops, coupled with increased costs because of the national lockdown situation and any bubble closures. Your financial support for these type of events in the current climate helps us keep staff employed and the service available for those of you who need it most. These two childcare facilities are the only ones we are allowed to operate under current measures and we have plans to put on other themed events which we will communicate to you soon.

Wishing you all a good weekend - only another 3 weekends before lockdown hopefully eases!

Kathryn Krynicki
Headteacher



Shalom-Mia Madzingira

It's the church **Shepherd's Market** this weekend:

See how you can support local and international charities on the website

<https://www.wisleywithpyrford.org/shepherdsmarket>

DIARY DATES

Tue 1 Dec: Wizard of Oz pantomime (Yrs 1 - 6) - Mufti Day.

Chocolate Raffle donations.

Sat 5 Dec, 10am - 1pm:
Christmas Tree Sale

Tue 8 - Fri 11 Dec: Christmas Lunch & Jumper Day

♦ Tue: Yrs 1 & 2

♦ Wed: Yrs N & R

♦ Thu: Yrs 3 & 4

♦ Fri: Yrs 5 & 6

Thu 17 Dec: School finishes at 1:30pm

Fri 18 Dec - 3 Jan: Christmas Holiday

Mon 4 Jan: INSET Day

Tue 9 Feb: Y6 Greeks Day

13 - 21 Feb: HALF TERM

Thu 1 Apr: School finishes at 1:30pm

2 - 18 Apr: Easter Holiday

Tue 11 May: Y5 Vikings Day

29 May - 6 Jun: HALF TERM

Mon 7 Jun: INSET Day

Tue 22 Jun: Leavers' Service at Guildford Cathedral

Wed 21 Jul: School finishes at 1:30pm

Pyrford's Great Christmas Chocolate Tombola Treat!

Having had a really challenging year, we'd like to give all of our children a treat this year and we need your help.

We would like families to donate chocolate (no nuts though please!). We want to get enough chocolate treats so that we can raffle them off for free to every child at the end of term. We need to collect 520 lots of chocolate (they can be anything from a chocolate lolly, selection box, Christmas themed chocs, a chocolate bar - whatever you fancy).

We are asking everyone to donate chocolate in return for wearing mufti on **Tuesday 1st December**. We will collect all the chocolate in, put it in quarantine and then bundle up and stick on raffle tickets. We will draw the chocolate raffles in each class at the end of term, with every ticket a winner! You are welcome to donate as little or as much as you like.



GOLDEN BOOK

CONGRATULATIONS TO OUR GOLDEN BOOK WINNERS THIS WEEK

N SQUIRRELS

Zachary Beattie for speaking about his family photos and gaining confidence.

3 MAPLE

Ollie Burnett for performing a scene from our story 'Into the forest' with great enthusiasm and confidence.

R BEECH

Thomas White for excellent writing about 'Billy's Bucket' (see below).

4 ALDER

Emme Gwyther for writing a captivating persuasive letter to Professor Brownstone.

R HAZEL

Ioan Davies for careful colouring of a Rangoli pattern.

4 LARCH

Evan Phillips for writing a captivating persuasive letter to Professor Brownstone.

1 CHESTNUT

Matthew Lewis for trying hard with his seasons tree (see right).

5 CHERRY

Inayah Shahzad for her excellent work on the topic 'Earth and Space' last half term (see page 6).

1 OAK

Alexandra Rossouw for a wonderful descriptive bonfire night poem.

5 WILLOW

Paddy Carroll for taking great pride in his write-up, including using a line graph for his results (see below).

1 PINE

Mia Sinclair for a fabulous wax resist Antarctic picture.

6 SYCAMORE

Liyana Ahmed for her amazing cube showing all her 'aspects' for RE work linked to Hinduism.

2 HAWTHORN

Sebastiaan De Vries for fantastic descriptive writing about their trip to the Environmental Garden.

6 HOLLY

Hannah Anderson for an informative and eye-catching poster about Frank Worsley, crew member of Endurance (see previous page).

2 CEDAR

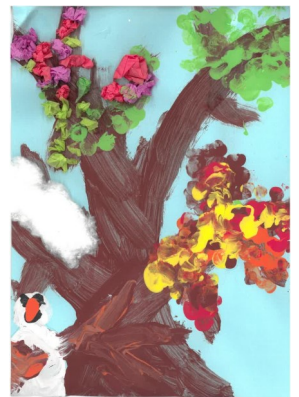
Dexter Don Carolis for fantastic descriptive writing after they visited the Environmental Garden.

6 LAUREL

Shalom-Mia Madzingira for an excellent drawing in the style of Roy Lichtenstein (see page 3).

3 ELM

Emily Bailey for writing a fantastic pay script and setting it out so well.



Billy's Bucket



In the bucket
I can see a
shadow
shar
barracuda
monte
ray

Teacher Assisted Work

Wednesday 21st October 2020

Record and present findings from enquiries.

Aim
were trying to find out what happens to shadows whilst we slowly rotate on our axis away from the sun.

Equipment
- Glub
- Table for recordings
- Cone
- Stick
- Meter stick
- Compass

Predictions
I thought the shadow would grow longer and not move.

Method
1 We need to record it and make it fair
2 Mark the location of stick and holder
3 Mark the shadow

Fair test
1 Always keep it at the same spot.
2 Always mark the location.

Results
It ended up moving and getting smaller but at the end it got bigger.

Time	Length	West	East
9:15 am	3m 4.2cm	West	East
10:15 am	2m 4.0cm	West	East
11:15 am	1m 8.2cm	West	East
12:15 pm	1m 7.0cm	South	North
1:15 pm	1m 7.0cm	South	North
2:15 pm	2m 1.5cm	South	North

These are the results of our experiment after 6 hours these are our results.

This looks like the sun moves around us but we move on our axis.

Diagram showing the sun, Earth, and a stick with a shadow.

The shadow got smaller and moved. But you read that in results.



	EYFS/KS 1	Lower KS2	Upper KS2	Class
1st	Immy Fitch	Mylo Rubie	Emelia Parvin	2 Cedar 262,382,418
2nd	Mira Moser	Eshal Abdullah	Leala Brown	5 Cherry 216,778,604
3rd	Mason Moser	Mujtaba Ahmed	Henry Hope	2 Hawthorn 193,964,960

Times Tables Rock Stars Awards!

Rock Hero Status has been awarded to:



	Lower KS2	Upper KS2
1st	Charlie Wilson	Laila Parsons
2nd	Amina Azeem	Shalom-Mia Madzingira
3rd	Eleanor Currid	Lily Tamerlane-Fitzgerald



And top of the Classes Leader Board are

1st Place: Elm Class

- 2nd Place: Maple Class

- 3rd Place: Laurel Class

<https://play.ttrockstars.com/ttrs/online>

Week commencing: 16/11/2020

In assembly this week, we are thinking about
Our responsibility to the earth
 To encourage us to take responsibility for our environment

Thursday 1st October 2020

With T. Explain how the planets move in our solar system.

The geocentric theory.

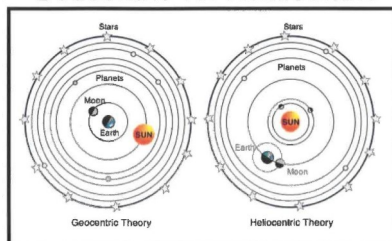
The geocentric theory is an idea that scientists believed. It meant that the Earth was in the middle of the solar system. Aristotle supported this theory. People thought that this was true because the Sun appears to move across the sky.

Copernicus - He was born in 1473. He believed that the sun was in the middle of the solar system. This is called a heliocentric theory. He did some maths but he did not do enough proof. He also kept quiet because he was a priest of the church so he did not want to annoy the people that went to the church.

Galileo - He was the one that actually proved it! He did about 1000 measurements to make his point accurate.

Inayah Shahzad

Geocentric vs. Heliocentric



FRANK WORSLEY
Ships captain (1872-1943)

Life
Frank Worsley was born in Akaroa in New Zealand and in 1872 and died in 1943 at the age of 71 and people said he was a vital sports and his activity was extraordinary.

Ships Captain
Frank was the ships captain in Shackleton's first and last expeditions. Did you know that when the first Expedition began it was around 2 months into WWI.

The expedition
The expedition was from 1914-17 and was 42 years when he joined.

After he sadly passed away
After he sadly passed away in February 1943, his cremation was held in Woking and his ashes were scattered in the river Thames. He died with lung cancer after 3 days after he was diagnosed.

Landmarks named after him
Name: Mount Worsley
Type: Summit
Description: A mountain on the side of a glacier.
Name: Worsley Icefalls
Type: Glacier
Description: Icefalls near a glacier.

Hannah Anderson

A Very Special Visit

We are so excited, as during December at Pyrford Primary School, we will be receiving **virtual visits** from some of Santa's elves, to deliver some magic and spread some Christmas Cheer.

The elves will enchant and entertain the children with stories of The North Pole, and spread the joy of Christmas through magic tricks, silly songs and oodles of laughter. The children will also get a full tour of Santa's workshop and the opportunity to see where their letters go and where the toys are made.

The elf visits will be viewed by all children in their class. The clever elves will use Christmas magic to customise their messages to the childrens' year groups (Nursery and Reception, Years 1 & 2, Years 3 & 4, Years 5 & 6) so they could include all sorts of fun details that are familiar to their classes!

At the end of the performance the children will be delighted to hear that the teachers have a special gift from Santa's workshop just for them, so **for just £2.50 per child**, they will receive a wrapped book (age appropriate), which will be delivered to school well in advance of the visit, and will be put into children's bags for them to bring home and excitedly unwrap. This is a **PTA event** which we wish to be **all inclusive**, so there is no charge for the 'Pre-recorded Elf Visit' and **ALL CHILDREN will receive a small chocolate gift** to bring home. **Donations are welcome** and suggested at £1 per child.

Please complete the order form using the link below to indicate if you would like your child/children to receive a book gift from Santa and make payment of £2.50 per child via bank transfer, using the bank details and reference detailed below.

If you can donate towards this event then please either pay via bank transfer using the details below, or put your donation into an envelope, marked PTA, and give to your class teacher via your child.

Bank and reference details for online book payments or donations:

Sort Code: 40-46-48

Account Number: 51432591

Ref: Elf20

Account Name: Friends of Pyrford Primary

**Please complete the linked form by SUNDAY
15th NOVEMBER for any children
receiving a book:**

Click Here!





GREAT QUALITY NON-DROP NORDMANN FIR CHRISTMAS TREE SALE COMPETITIVE PRICES & WIDE SELECTION AVAILABLE

SATURDAY 5th DECEMBER 10am - 1pm

Pyrford Primary School
Coldharbour Road
Pyrford | GU22 8SP
Card payment only

All profits go directly to the school
Friends of Pyrford C of E Primary School Registered Charity 1047320



Christmas is coming...

Please help us to raise money for the school while you do your online Christmas shopping!

Simply download the app or desktop browser tool and click the link to each retailer before you check out. It couldn't be easier.

We have raised nearly £4000 this way so far!

You shop, 4,300 sites will donate to us for free.

ebay	john lewis	M&S	GROUPON	Brat	Booking.com
buyagift	Sainsbury's	Argos	red letter	WAITROSE	
Iceland	moonpig	Cargo PCWorld	ASOS	GAME	

Find us on easyfundraising.org.uk or get the App

GET IT ON Google Play | Download on the App Store

Over £ 33 million raised | Trustpilot ★★★★★ | 1.8 million users



Christmas Raffle

Back by popular demand! This year the Pyrford Christmas Raffle is going online! Buy tickets for a chance to win some great prizes. Our top prizes this year are:

- Sony headphones
- Luxury hamper
- Wine hamper
- (& many more!)

This year we want to raise £2500 through the raffle to help purchase IT equipment to loan to families in case of any further home learning, and to fund an in-school Christmas Pantomime and Elf Party for the younger kids.

If we raise £2500 through the raffle, ALL the children in the school will be treated to extra golden time or a cinema afternoon, complete with popcorn and a drink.

Tickets are £1 each, so let's work together to raise money for the school and treat the children to an extra Christmas treat. Thank you!

Tickets on sale 20th November. Winners will be drawn 12th December.

Pyrford Primary Puddings

The PTA are delighted to be bringing a very tasty fundraiser to the school this Christmas! We have teamed up with an artisan bakery to offer delicious Christmas puddings (and a sticky toffee alternative) personalised with labels designed by three lucky competition winners in our school.

	Weight	Portions	Price
Medium Traditional	454g	4	£6
Large Traditional	908g	8	£9
Sticky Toffee	290g	3-4	£5

How to Order

To place your order please complete **this form** and make a bank transfer by 20th November.

Sort Code: 40-46-48

Account Number: 51432591

Ref: Puddings

Account Name:

Friends of Pyrford Primary

Label Design Competition

The puddings will be beautifully packaged with labels designed by three of the children at school. All children will be completing their designs at school next week and one winner will be chosen for each of our three pudding varieties. There will be one from Squirrels/ Reception, one from KS1 and one from KS2.

The lucky winners will be announced in the newsletter on Friday 20th.

Our puddings will arrive on the week of 14th December.

The PTA will receive a profit from every pud, to be spent across the school. With so many of our usual fundraisers limited by current restrictions we really do appreciate your support more than ever.

Thank You!





<https://schoolgardening.rhs.org.uk/Competitions/The-Secret-Garden>

In collaboration with Sky Cinema, the RHS are running a competition to celebrate the release of the new 'Secret Garden' film.

See the link above for information about the competition and how to enter. The challenge is to design your own garden.

Please send your entries direct to schoolgardening@rhs.org.uk but be sure to include the school's name on the entry form.

The winning entry will have all or part of their design created in real life at school. Good luck!



1st Pyrford Rainbows needs your help!

We need new helpers and leaders to continue offering Rainbows to girls aged 5-7 in an around Pyrford.

Rainbows is all about developing self-confidence, building friendships and learning new things. Although the current restrictions mean we can't have face to face meetings, there is still an opportunity to have fun and create an exciting experience just for girls.

In order for these girls to have an opportunity to be part of Rainbows we need volunteers for our Rainbows unit in Pyrford from January 2021 as the current leaders are stepping down.

If your child is on the Rainbows waiting list and you volunteer to help run meetings your daughter will automatically be able to join the Pyrford unit.

If you would like to become involved in Girlguiding in Pyrford or have any questions about how by becoming a unit leader or unit helper please contact:

Lisa Anderson- lisaanderson023@gmail.com or

Jo Povey- Joannaedwards@yahoo.co.uk

Consultation on admission arrangements for EEEA Trust schools for 2022

Engage Enrich Excel Academies (EEEE), as the admission authority for all schools within the Multi Academy Trust (MAT), are conducting a full consultation on admission arrangements, including proposed changes, for three of the schools within the MAT for September 2022.

The Schools are:

- Byfleet Primary School, Woking, Surrey
- Maybury Primary School, Woking, Surrey
- Westfield Primary School, Woking, Surrey

Full details of the consultation and the changes being proposed are available at www.eeea.co.uk.

Comments are invited on any aspect of the proposed Admissions Policy for the three schools.

In particular, the proposed changes from the 2021/2 policies are as follows:

- Byfleet Primary School and Maybury Primary School – to remove the “exceptional arrangements” criterion.
- Byfleet Primary school, Maybury Primary School and Westfield Primary school to remove the “Nearest School” criterion.

The consultation will run from Monday 9th November 2020 to Tuesday 22nd December 2020.

Anyone wishing to submit their views can email the Trust at admissions@eeee.co.uk or in writing to David Harris, CEO, EEEA Trust, Queen's Ave, Aldershot, Wellesley GU11 4AA.

After the closing date, responses will be collated and presented to the Trust board meeting on 5th Feb 2021.

Once the board has considered all the responses the determined admission arrangements will be placed on EEEA's website at www.eeea.co.uk.