

# PYRFORD PRIMARY SCHOOL

# PUBLIC CONSULTATION



The building design is organised around an internal central street with vertical lightwells and roof-lights that unify the ground and first floor into an integrated whole.

This street, which forms the heart of the scheme, allows for good passive supervision, informal group learning and break-out space. At each end of the street there are direct views out to the landscape beyond.

Intersecting with the street, is the entrance and library space which allow visual permeability for visitors and students arriving at the building.

We have situated the youngest years on the ground floor (Reception and Year 1) to enable free flow for students from inside to outside. We have situated the reception classrooms to the south façade, close to the main entrance, as is likely that parents of reception students may want to drop their students directly outside their classrooms. For Reception and Year 1 classrooms we have developed a suited classroom pair with integrated toilets and cloakroom. There are many sub-options for toilet configurations available to the client which can be found in the design appendices. However, the layouts shown in the main plans we believe utilise the space the most successfully. Allowing for maximise cloakroom and toilet space and minimising dead circulation areas.



SURFACE TO AIR

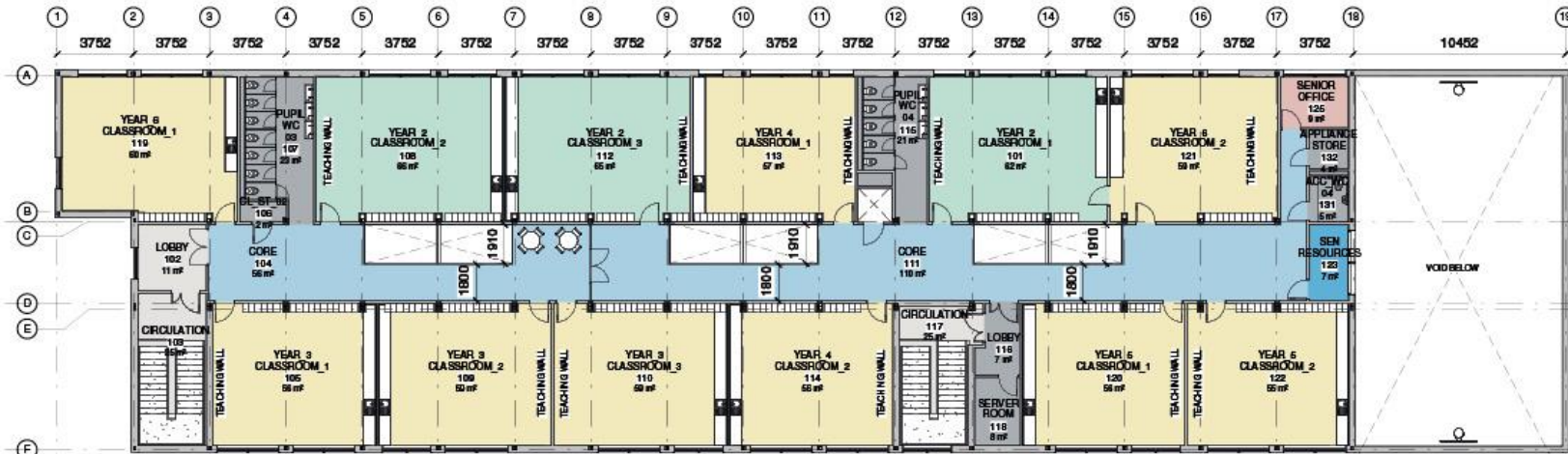
engenuiti



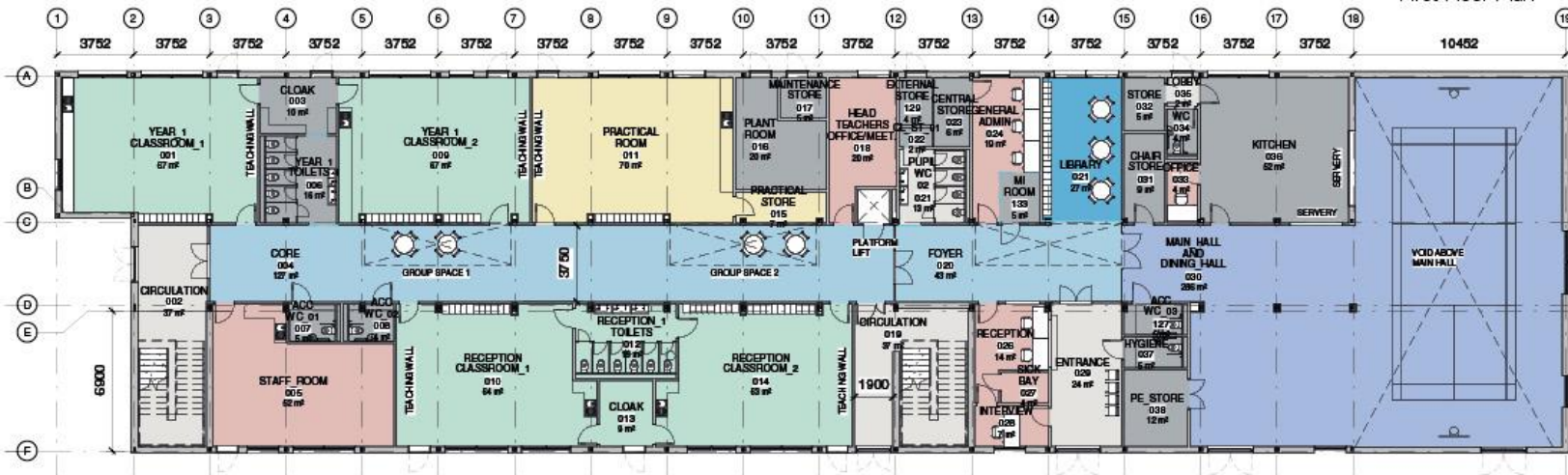
JULY 2015

PYRFORD PRIMARY SCHOOL

PUBLIC CONSULTATION



First Floor Plan



Ground Floor Plan



SURFACE TO AIR



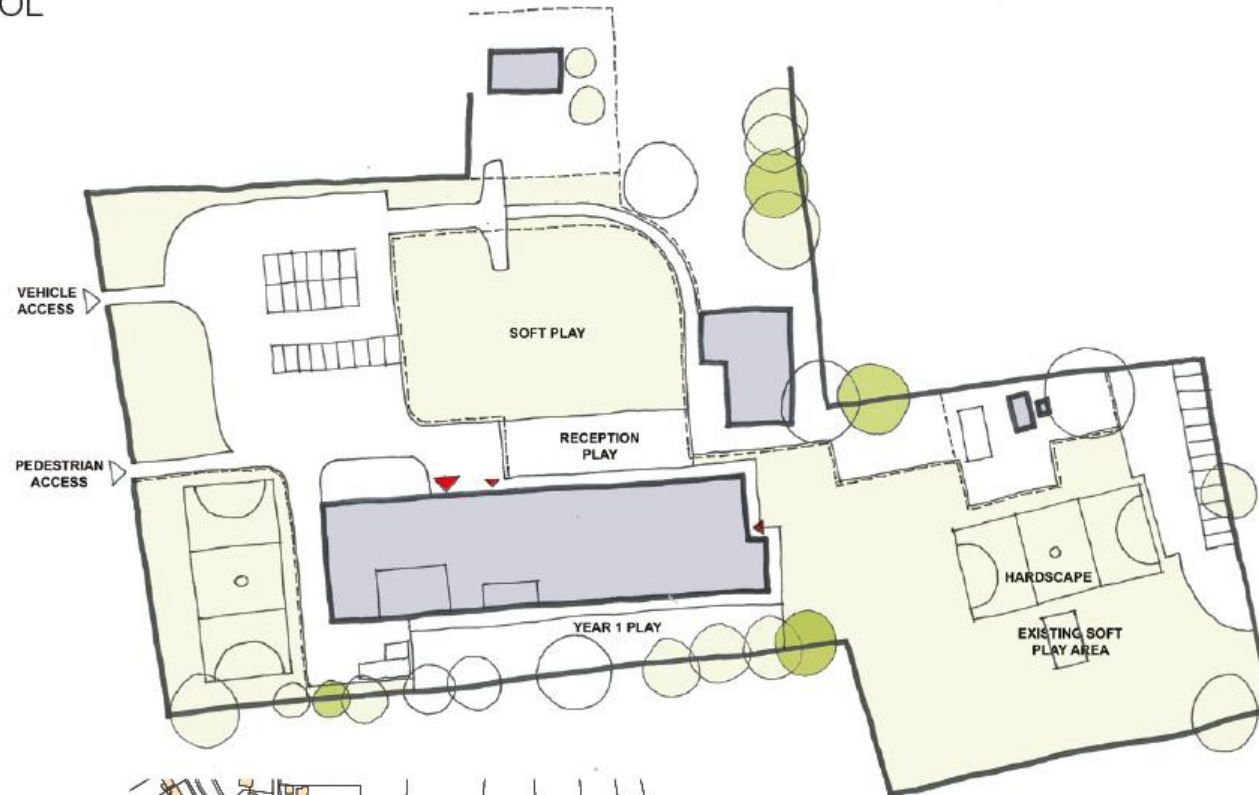
JULY 2015

# PYRFORD PRIMARY SCHOOL

## SITE PLAN

### OUTLINE PROGRAMME

- Public Exhibition/Community Consultation: July 2015 – August 2015
- Council engagement: July 2015 – August 2015
- Submit Planning Application – 17 August 2015 (target date)
- Planning Application Decision – 20 October/17 November 2015
- Building Procurement/Construction/Handover: November 2015 – September 2016
- Demolition of Existing Buildings: September 2016 – November 2016
- Children's Centre Refurbishment: October 2016 – December 2016
- Complete Landscaping Works: October 2016 – December 2016



### SITE PLAN

Maximise outdoor play alongside new building for Reception and Year 1

Maximise soft play areas on the footprint of the existing school

Tree removal kept to a minimum in support of planning considerations

Re-provision of netball courts at Sports England request

Existing car park and outdoor swimming pool retained



Demolition Plan



SURFACE TO AIR

engenuiti



JULY 2015

# PYRFORD PRIMARY SCHOOL

## DAY IN THE LIFE

# PUBLIC CONSULTATION



**8 am**

### ENTRANCE & LIBRARY STREET

Going to school is great in the morning – I am getting in at 8am today to catch up with friends and join the breakfast club. Walking through the school entrance I can immediately see my friends in the Library in front of me, and I go to join them as the activities look interesting. I like being able to see across the street into the entrance and watch the hub of activity in the morning. It makes me feel part of the school community.



**10 am**

### GROUP WORKING IN THE STREET

School starts at 9am, and I am on my way to a lesson. I love walking down the street where I can see the different activities in the school, and watch what the older children are doing. Today I have a group english lesson in the street, where we can work in a small group with the teacher away from the main classroom. It feels like a treat to be able to have a lesson here, rather than in the classroom.



**12 pm**

### CLASSROOM

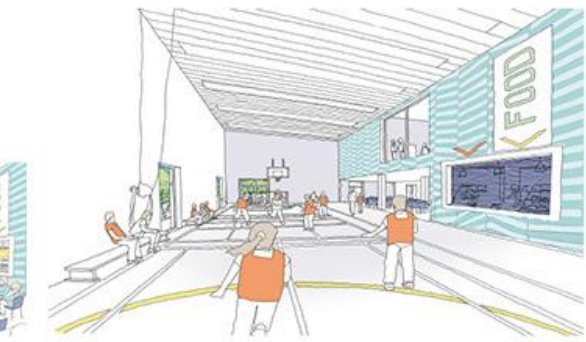
At 12pm I am back in the classroom and we are doing drawings based on nature, which is great as we can go outside to the play area to get leaves and rub the trees! I love being outside, and my classroom has a door to the play area which we leave open so we can go in and out during the day for different activities. In my classroom there is a wet area with a sink which is useful when we are doing art classes.



**1 pm**

### HALL 'DINING SETTING'

It's lunch time and I am sitting with the dining hall with my friends. The food here is great, and we get to choose from the options from the canteen lady. The dining hall is super cool with patterns and images on the walls, and is very light and airy. I like to look up to the window at the end of the street where other children are looking down into the hall.



**2 pm**

### HALL 'SPORTS SETTING'

After lunch we have a sports lesson in the main hall and today we are playing a game of indoor football. By now all the tables and chairs from lunch have been cleared away and the servery is closed so we have plenty of space to play games. We use the hall for lots of different activities and I like coming there as it is much more fun than the normal lesson!

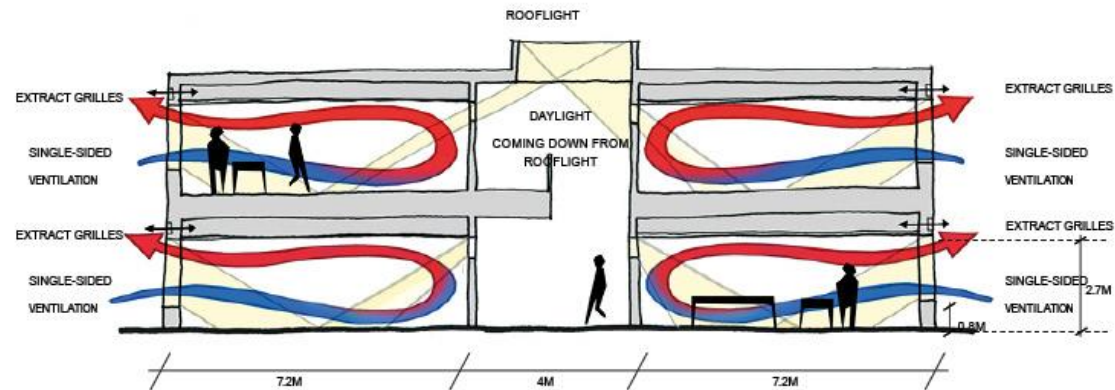
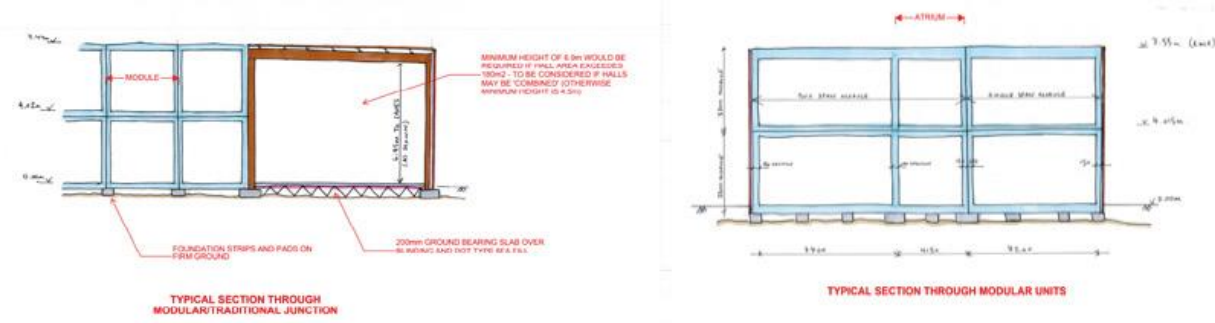
# PYRFORD PRIMARY SCHOOL

# PUBLIC CONSULTATION

The Dining Hall and Main hall are located directly adjacent to the entrance to allow for good communal access. They are efficiently planned to allow for maximum flexibility for the space. Food can be served either in the main double height dining room or dining hall as we have server hatched shown on the two sides. Kitchen deliveries will be taken around to the north elevation space.

On the first floor all other classrooms are located. As the students are from Year 2 upward on the higher floor, the toilets are not located between classrooms but in two wet cores, which allow the floor plate to be configured more flexibly. The staff room and a senior office have been located on the first floor to improve passive supervision. All classrooms have a clear floor to ceiling height of 2.7m, with a window sill level of 800mm. All classroom spaces have a depth of 7.2m.

The spaces have dual aspect natural light due to the clerestory windows situated on the internal corridor spaces. All classrooms have 2sqm of storage space allocated to them (in addition to their briefed area) this storage can either be accessed directly from the classroom or from the corridor.



SURFACE TO AIR



JULY 2015

PYRFORD PRIMARY SCHOOL  
ELEVATIONS

PUBLIC CONSULTATION



SURFACE TO AIR



JULY 2015