



## New Year Newsletter

Dear Parents, Carers & Partners,

Welcome back from the Christmas break and New Year celebrations. Here at the Children's Centre, we have another busy term planned, including our visit to the Glass House at RHS Wisley to see the butterflies on Friday 31st January, and a half term event during February.

We have to thank the Parent Forum for all their help and support in running last year's Christmas party, which we think was the best yet!

Your financial donations were greatly appreciated to support the party and other events will also benefit from your generosity.

Over the next term we will be planning some fund raising activities, as we still need to raise additional funds to support special events.

Any donations, either financial, resources or your time, all are greatly appreciated.

We look forward to seeing you soon

Carey, Clare, Nasreen, Shirley & Yvette

### parent forum

The Parent Forum is your voice on what the community needs from it's Children's Centre.

Your views are very important to us. Please let a Parent Forum rep know your views about what the local community needs, and feedback on the centre's services you have attended  
or

If you think you would like to be part of this please contact the Children's Centre for more details.

**NEXT MEETING: 19th May**

### *Trading Boards*

The Children's Centre now offers a trading board at it's St Mary's, Byfleet location and at the Byfleet Clinic in the Village Hall.

So whether you are looking for a bargain or have something to sell, please let us know and you can advertise for free.





## Christmas Party Fun

On Monday 9th December, we hosted a fantastic Christmas Party in Byfleet Village Hall, where the families enjoyed some wonderful Christmas craft, a great bouncy castle, and of course a lovely visit to our grotto to meet Father Christmas himself!

We would like to send a massive **Thank You** to all the parents, who helped make it happen, with donations of their money, time, decorations, Christmas lights, craft resources, mince pies and so much more. Without this kind of help, it would be almost impossible for the Children's Centre to hold such a great event.

Parent Forum, we applaud you!!



## Donations Box

Thank you to everyone who has donated money to the Children's Centre to help fund the Christmas Party.

Over November and December you very kindly donated a total of £247.59  
This is a massive amount and is very much appreciated.

The donations boxes will remain in both centres, as further donations will be gratefully received, to help provide craft resources and snack items, as well as general resources within our sessions.



## Are You Looking For Childcare?

Please contact the Children's Centre should you require any help, support or information on local childcare providers.

The Children's Centre advertises local registered Child Minders Vacancies.

**There is a range of childcare available locally.**

## Looking for a Childminder in the Byfleet area?

An experienced Byfleet Childminder, Mary Moore, currently has vacancies.

Mary offers great nurturing care for her charges, so you can feel confident that you are leaving your child in a fun, welcoming and loving environment.

Her days of work are Monday, Tuesday, Thursday and Friday. She is also able to do school drop offs / pick ups at St Mary's Primary School.

If you would like to know more details please contact Mary on  
**07968 345909**



### \*\*\*\*Polite Notice\*\*\*\*

In the months of September, October, November and December, 111 places were not filled as families failed to attend sessions they had booked, without letting us know.

This is 111 places that could have been filled by other families on our waiting lists.

Please remember, although we are providing these sessions free of charge, they still come at a cost to the Children's Centre. If you are unable to commit to your booking, please consider others on the waiting list.

Please let us know if you cannot attend, no matter how short the notice is.

### Useful Links

#### Health

[www.milk.co.uk](http://www.milk.co.uk)

[www.breastfeedingnetwork.org.uk](http://www.breastfeedingnetwork.org.uk)

[www.nhs.uk/change4life](http://www.nhs.uk/change4life)

[www.nhs.uk/vaccinations](http://www.nhs.uk/vaccinations)

[www.wbhc.org.uk](http://www.wbhc.org.uk)

Surrey Dental Helpline 0845 2712040

Stop Smoking Helpline 0800 022 4332

#### Training, Jobs & Finance

[www.adultlearninginsurrey.org.uk](http://www.adultlearninginsurrey.org.uk)

[www.jobfresh.co.uk](http://www.jobfresh.co.uk)

[www.surreycc.gov.uk](http://www.surreycc.gov.uk)

[www.gov.uk/contact-jobcentre-plus](http://www.gov.uk/contact-jobcentre-plus) 0845 6060234

[www.moneyadvice.service.org.uk](http://www.moneyadvice.service.org.uk)

[www.windowonwoking.org.uk](http://www.windowonwoking.org.uk)

#### Staying Safe

[www.capt.org.uk](http://www.capt.org.uk)

[www.nspcc.org.uk](http://www.nspcc.org.uk) 0808 800 5000

[www.surreycc.gov.uk/domesticabuse](http://www.surreycc.gov.uk/domesticabuse)

Your Sanctuary Surrey 24 hour helpline :  
01483 776822

[www.yoursanctuary.org.uk](http://www.yoursanctuary.org.uk)

[www.surreyagainstda.info](http://www.surreyagainstda.info)

#### Additional Needs

[www.asksid.org.uk](http://www.asksid.org.uk)

[www.whitelodgecentre.co.uk](http://www.whitelodgecentre.co.uk)

#### Helplines

[www.surreycc.gov.uk/fis](http://www.surreycc.gov.uk/fis)

[www.citizensadvice.org.uk](http://www.citizensadvice.org.uk)

[www.home-start.org.uk](http://www.home-start.org.uk)

[www.familyandparenting.org](http://www.familyandparenting.org)

[www.nfm.org.uk](http://www.nfm.org.uk) (family mediation)

#### Magazine Publications

[www.surreyfamilygrapevine.co.uk](http://www.surreyfamilygrapevine.co.uk)

[www.familiessurreywest.co.uk](http://www.familiessurreywest.co.uk)

#### Play Resources

[www.bbc.co.uk/cbeebies/grownups](http://www.bbc.co.uk/cbeebies/grownups)

[www.ascoeducational.co.uk](http://www.ascoeducational.co.uk)

#### Other

Woking Borough Council : 01483 755855

[www.woking.gov.uk](http://www.woking.gov.uk)

## Have You Made a New Years Resolution?



If you want to give up smoking then why not consider either:  
attending a 'quit smoking' clinic held at West Byfleet Health Centre  
on Tuesday evenings at 6.30pm

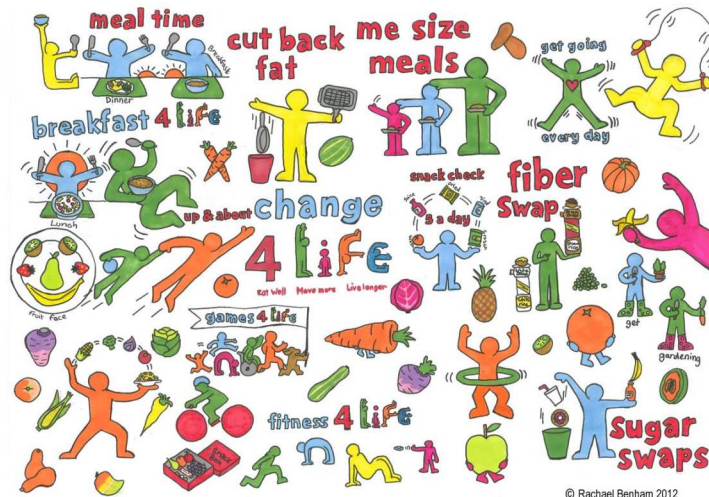
Or alternatively

You can call for support on 0845 602 3608 or landline number  
01483 519616. These numbers give you access to people who can  
offer advice or book you onto a smoking cessation course.

Or perhaps you want to simply make some healthy changes for you  
and your family?

Go online at [www.nhs.uk/change4life](http://www.nhs.uk/change4life)

For some easy tips, ideas and recipes to help make change happen!



### \*\*\*\* Donations wanted \*\*\*\*

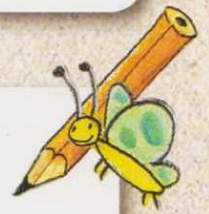
At the Children's Centre we are always looking for donations of  
Shoe Boxes  
Glue Sticks  
Stickers

Anything else you think we may find a use for,  
to help us with some up and coming craft ideas



# Free Early Education for Two Year Olds (FEET)

Did you know that your  
two year old could qualify  
for up to 15 hours of free  
childcare a week?



To see if you can apply for FEET

Call 0300 200 1004

Go to [www.surreycc.gov.uk/feet](http://www.surreycc.gov.uk/feet)

Or visit your local children's centre



### Children's Centre Policies

All the Children's Centre policies, including Complaints and Safeguarding policies, are available to view at all our venues.

Please ask a member of staff if you wish to see them.

### **We Value your Feedback.**

Has the Children's Centre helped you?

Have you a Children's Centre story you would like to share?

Is there anything you would like to tell us about the Children's Centre?

If so please send us an email with your story & let us know if you would like to share this in the next Newsletter

[childrenscentreadmin@pyrford.surrey.sch.uk](mailto:childrenscentreadmin@pyrford.surrey.sch.uk)

### The Children's Centre Team

Clare Gane — Children's Centre Manager

Yvette Tree - Children's Centre Outreach Worker

Carey Harrison - Children's Centre Outreach Worker

Nasreen Farooq - Administrator

Shirley Wilson - Sessional Play Worker and Crèche Leader

The Team's contact details are as follows:

01932 339055

[childrenscentreadmin@pyrford.surrey.sch.uk](mailto:childrenscentreadmin@pyrford.surrey.sch.uk)

Pyrford & Byfleet Children's Centre, Pyrford CE (aided) Primary

School, Coldharbour Road, Pyrford, Surrey, GU22 8SP

Our opening hours are Monday, Wednesday & Friday

9.00am — 12 noon

12.30pm — 3.30pm

# babycafé



## Woking Baby Café

The Ypod Centre  
Chobham Road  
Woking  
GU21 6JD

**OPEN MONDAYS (except Bank holidays)**

**10am—12 noon**

A drop in centre for pregnant and breast feeding mothers. Friendly, relaxed café atmosphere with expert help and support on hand.

If you require support at other times see below for alternatives.

### **NCT Helpline**

every day (including bank holidays)

8am - midnight

**0300 330 0700**

### **Breastfeeding Network Supportline**

every day 9.30am - 9.30pm

**0300 100 0210**

### **National Breastfeeding Helpline**

every day 9.30am - 9.30pm

**0300 100 0212**

## **ECAT : Every Child A Talker**

Communicating with your child from as early as possible, can help your child develop healthy speech and language skills

### **A FEW TOP TIPS**

- When out for a walk with your child, chat about what you can see
- Catch ducks in the bath or sink using a sieve, try counting the ducks

For more tips or information about communicating with your child, visit the Children's Centre, and chat with one of our friendly team.

### **Useful Websites:**

[www.talktoyourbaby.org.uk/home](http://www.talktoyourbaby.org.uk/home)

[www.thecommunicationtrust.org.uk/hello](http://www.thecommunicationtrust.org.uk/hello)

[www.afasicengland.org.uk](http://www.afasicengland.org.uk)

[www.literacytrust.org.uk](http://www.literacytrust.org.uk)

## **\*\*\*\*Breast Pump Hire\*\*\*\***

Did you know you can hire a Breast Pump from us?

These electric breast pumps are recommended by Health Professionals and Breast Feeding Councillors.

For a small fee of £10 for a period of up to 2 months.

Please contact one of the Children's Centre team for more details





**ANTE NATAL & BREASTFEEDING MUMS, THERE'S A WARM WELCOME AWAITING YOU FOR  
HELP & ADVICE AT THE FOLLOWING VENUES**

<b>Venue &amp; Group</b>	<b>Day</b>	<b>Time</b>
Chobham & West End Children's Centre: Breastfeeding Support Clinic Chobham Community Centre, Chobham, Surrey GU24 8AB 01276 855675 Lucas Green Surgery, Lucas Green Road, West End, Woking, Surrey GU24 9LU	1 <sup>st</sup> and 3 <sup>rd</sup> Wednesday 2 <sup>nd</sup> and 4 <sup>th</sup> Wednesday	1.30 – 3pm 1 – 2.30pm
Clarendon Children's Centre: Baby Cafe 01784 424759 Knapp Road, Ashford, Middlesex TW15 2HZ For babies up to 4 weeks only	Thursday Monday	12.30 – 2pm 12.30 – 2pm
Farnborough Breastfeeding Clinic (Frimley Pk Hosp. Midwives) 01276 604604 Owls Children's Centre, Mayfield Road, Farnborough GU14 8LH 01252 519920	Monday and Thursday	1 – 4pm
Farnham Hospital: Health Visitor Clinic 01483 782000 ext. 782086 Hale Road, Farnham, Surrey GU9 9QL	Monday	10 – 12noon
Gomshall Mill: Ruth Fromow 07833 902229 Gomshall Mill, Gomshall, Guildford, Surrey GU15 9LB	Wednesday	10 – 11.30am
Grovelands Children's Centre: Breastfeeding Drop-In 01932 229313 Sandy Lane, Walton-on-Thames, Surrey KT12 2EQ; and 1 <sup>st</sup> , 3 <sup>rd</sup> & 5 <sup>th</sup> Thursday of each month	Thursday	9.45 – 10.45am  9 – 11am
Guildford Children's Centre: Child Health Clinic 01483 566589 Hazel Avenue, Bellfields, Guildford, Surrey GU1 1NR; and York Road, Guildford, Surrey GU1 4DU 01483 561652	Wednesday Friday	10.30 – 12noon  9.30 – 10.30am
Guildford Grove Children's Centre: Drop-In Clinic 01483 504713 'The Spinney', Southway, Guildford, Surrey GU2 8YD	Monday (except Bank holidays)	12.30 – 1.45pm
The Maybury Centre: Baby Clinic 01483 776877 Board School Road, Maybury, Woking, Surrey GU21 5HD	Thursday	1 – 3pm
Old Woking Children's Centre: Drop-In & Baby Club 01483 727608 The Community Centre, Sundridge Road, Old Woking, Surrey GU22 9AT	Tuesday	11.30 - 12.30pm
Pine Ridge Children's Centre: Baby Clinic 01276 401605 Esher Road, Camberley, Surrey GU15 4AW; and Breastfeeding Support Group High Cross Church, Knoll Road, Camberley GU15 3SY	Tuesday Wednesday	9.15 – 10.30am  12.30 – 2.30pm
Potters Gate Children's Centre: Drop-In Clinic 01252 891250 Beavers Road, Farnham, Surrey GU9 9QL	Monday (except Bank holidays)	10 – 11.30am
Royal Surrey County Hospital, Parentcraft Room, Level B, Antenatal Clinic Egerton Road, Guildford, GU2 7XX (venue may vary occasionally)	Wednesday	10.30- 12noon
Sayes Court Children's Centre: Breastfeeding Support Group 01932 851502 Sayes Court School, Sayes Court Farm Drive, Addlestone, Surrey KT15 1NB	Tuesday	10 – 12pm
St John's Children's Centre: New baby Group. Contact Centre for details Victoria Road, Knaphill, Woking, Surrey GU21 2AS 01483 476450		
Sythwood Children's Centre: Drop-In Clinic 01483 770063 Sythwood Primary School, Sythwood, Woking, Surrey GU21 3AX	Thursday	2 – 3.30pm
Woking Children's Centre: Baby Club 01483 730517 Blackmore Crescent, Sheerwater, Woking, Surrey GU21 5NZ	Tuesday	11 – 12.30pm
Woking South Children's Centre: Baby Cafe 01483 757160 / 07919 145320 YPod Centre, Chobham Road, Woking, Surrey GU21 6JD	Monday (except Bank holidays)	10 – 12noon
<b>NCT BREASTFEEDING COUNSELLORS</b>		
Carol Smith: Byfleet & District Branch 01932 353036 Karen Vickery: Walton-on-Thames 01932 230727 Mary Soane: Walton-on-Thames 01932 785749 Rachel Loxton: Woking Branch 01483 771552 Trisha Whisker: Chertsey & Addlestone Branch 01932 842536		

#workwithchildren

EXPLORE YOUR OPTIONS AT OUR  
working with children  
**CAREERS FAIR**

**SATURDAY** 8 MARCH 10AM TO 3PM Leatherhead Leisure Centre  
2014 (drop in anytime) Guildford Road KT22 9BL  
**LEATHERHEAD**

Want to WORK  
WITH  
**Children?**

working with children Whether you're returning to work, still  
**CAREERS FAIR** studying or looking for a career change,  
come along and explore your options.

QUALIFICATIONS **FUNDING** free workshops volunteering  
JOB OPPORTUNITIES CAREER OPTIONS **ADVICE**

**Register now**  
[www.surreycc.gov.uk/workwithchildren](http://www.surreycc.gov.uk/workwithchildren)

[www.surreycc.gov.uk](http://www.surreycc.gov.uk)



**SURREY**  
COUNTY COUNCIL

Making Surrey a better place

## Working Tax Credit

Local data indicates that there are families in the Children's Centre area, who are not claiming the Childcare Element of their working Tax Credits, even though they are entitled to.

To see if you may be eligible for this benefit or any others please go to

[www.gov.uk/benefits-adviser](http://www.gov.uk/benefits-adviser)



If you need any support or help with this please contact a member of the Children's Centre team

01932 339055



## FRESH START JOB SEARCH NETWORK WOKING

Come along to the Maybury Centre, Board School Rd. Maybury GU21 5HN on **Wednesday** at 12.30-1.30 to meet our local adviser.

Get help with job search skills, online support and hidden jobs.

### EVERYONE WELCOME

- One to one help
- Laptops available for job search skills
- Relaxed atmosphere
- Free coffee
- Support with English language skills

Contact Sunita Kaur

[sunita@caringdaycare.co.uk](mailto:sunita@caringdaycare.co.uk)

01483 730517

or Elizabeth Whiddett Surrey Lifelong Learning Partnership

[ew@surreyllp.org.uk](mailto:ew@surreyllp.org.uk) 01483 476632

Or just turn up!

surrey lifelong  
learning partnership

